

Model 1200 Multi-Stage 2 Heat / 1 Cool Heat Pump

**Builder Series
Non-Programmable**



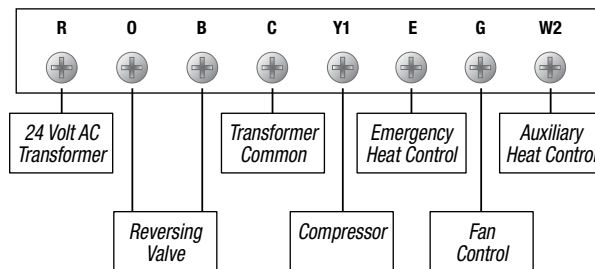
Features

- Bright Blue Display Backlight
- AC Powered with Latching Relay Output
- Non-Volatile Memory Retains Users Settings
- Separate O & B Terminals
- Compressor Short Cycle Protection
- Adjustable 1st and 2nd Stage Temperature Differential
- Auxiliary Heat Indicator
- ESD Guard™ Electronic Circuitry
- Front Access Reset Button
- F° / C° Switch
- Mount to Horizontal Box

The
brighter
choice®

5 YEAR
LIMITED
WARRANTY

Terminal Designations



Architectural Specifications

The digital non-programmable thermostat shall be a Braeburn®, model number 1200, 3.75" high x 4.94" wide x 1.19" deep, powered by 24 Volt AC. The thermostat shall be compatible with multi-stage heat pump systems with up to two stages of heating and one stage of cooling. The thermostat shall have a bright blue backlight display, front loading battery door and separate sub-base for trouble free installation. Temperature control range shall be between 45° and 90° F (7° and 32° C), accuracy of +/- 1° F (+/- .5° C), humidity range between 5% and 95% relative humidity. The thermostat shall include non-volatile memory to retain user settings and auxiliary heat indicator. A front reset button will return user settings to default values when pressed. The thermostat can be mounted to a horizontal junction box.

Product Specifications

Dimensions:	3.75" x 4.94" x 1.19"
Electric Rating:	24 Volt AC (18-30 Volt AC) 1 amp maximum load per terminal 3 amp total maximum load (all terminals)
AC Power:	18-30 Volt AC
Compatibility:	Multi-stage heat pump systems with up to two stages of heating and one stage of cooling
Control Range:	45° to 90° F (7° to 32° C)
Display Range:	40° to 99° F (4° to 37° C)
Accuracy:	+/- 1° F (+/- .5° C)
Temperature Differential:	1st Stage - .5°, 1°, or 2° F (.25°, .5°, or 1° C) 2nd Stage - 2°, 3°, 4°, 5°, or 6° F (1°, 1.5°, 2°, 2.5°, or 3° C)
Storage Temperature:	14° to 140° F (-10° to 60° C)
Operating Humidity:	5% to 95% Relative Humidity
Interchangeable Sub-Base:	Braeburn 2200 Programmable 2 Heat / 1 Cool Heat Pump
Terminations:	R, O, B, C, Y1, E, G, W2

Shipping Information

INDIVIDUAL CARTON	MASTER CARTON
Dimensions: 4.33" x 5.63" x 1.86"	Quantity: 6
Weight: .58 lbs.	Dimensions: 5.94" x 11.81" x 4.80"
	Cubic Feet: .19
	Weight: 3.7 lbs.

Braeburn 1200 Replaces

Honeywell®	T8411, T841*, Y594*
White-Rodgers®	1F59-11, 1F79-111, 1F58*
Robertshaw®	8425*, 9420*, 9520*
ICM®	SC2200*, SC2201*, SC2211*
LuxPro®	PSDH105, PSDH121*

*Verify specific multi-stage heat pump application requirements. All trademarks are the property of their respective owners.

Accessories

2950 Universal Wall Plate (6.5" x 6.5" x .125")
5970 Universal Thermostat Guard

FREE Contractor Branding Available!

Visit our website (www.braeburnonline.com) for more information, contact your local distributor or call our sales department toll-free at 866-268-5599 (U.S. Only), 630-844-1968 (Outside the U.S.).

Date: _____

Engineer: _____

Job Name: _____

Model No.: _____

Location: _____

Submitted By: _____

Contractor: _____

Submitted For Approval: _____ Record: _____