

Model 5100 Multi-Stage 2 Heat / 2 Cool

Premier Series Programmable



Features

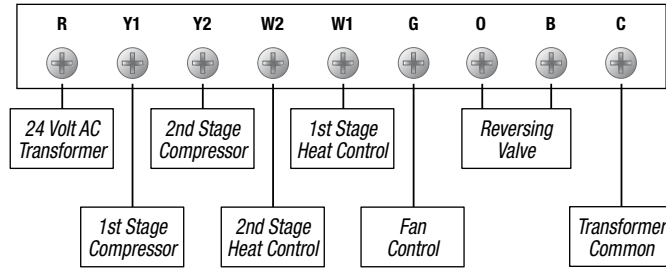
- Universal 7 Day or 5-2 Day Programming
- Large Display with Bright Blue Backlight
- AC Powered with Battery Back-Up
- Non-Volatile Memory to Maintain User Settings
- Recirculating Fan Mode
- Residual Cooling Fan Delay
- Filter Check Monitor
- Adaptive Recovery Mode (ARM™)
- Adjustable 1st and 2nd Stage Temperature Differential
- ESD Guard™ Electronic Circuitry
- Compressor Short Cycle Protection
- Separate Heating and Cooling Set Point Program Times and Temperatures
- Temporary Program Override for 4 Hours or Until Next Set Point
- Programmable Extended Hold Mode
- Front Access Reset Button
- F° / C° Switch
- Gas / Electric Fan Switch
- Mounts to Vertical or Horizontal Box
- Easy Access Front Battery Door
- Separate O & B Terminals
- Auxiliary Heat LED Status Indicator
- Keypad Lockout
- Meets ENERGY STAR® and California Title 24 Guidelines

The
brighter
choice®



Braeburn®

Terminal Designations



Architectural Specifications

The digital programmable thermostat shall be a Braeburn®, model number 5100, 4.63" high x 5.00" wide x 1.25" deep, powered by 24 Volt AC with two "AA" Alkaline batteries (3.0 Volt DC) to retain clock settings and universal 7 or 5-2 day switch selectable programming. The thermostat shall be compatible with multi-stage heat / cool systems with up to two stages of conventional heating and two stages of cooling. The thermostat shall have a bright blue backlight display, front loading battery door, separate sub-base for trouble free installation and keypad lockout. Temperature control range shall be between 45° and 90° F (7° and 32° C), accuracy of +/- 1° F (+/- .5° C), humidity range between 5% and 95% relative humidity. The thermostat shall include non-volatile memory to retain user settings, filter check monitor, adaptive recovery mode (ARM™), separate heating and cooling set point program times and temperatures, programmable recirculating fan mode, residual cooling fan delay and auxiliary heat LED status indicator. A front reset button will return user settings to default values when pressed. The thermostat can be mounted to a horizontal or vertical junction box.

Product Specifications

Dimensions:	4.63" x 5.00" x 1.25"
Electric Rating:	24 Volt AC (18-30 Volt AC) 1 amp maximum load per terminal 3 amp total maximum load (all terminals)
AC Power:	18-30 Volt AC
DC Back-Up Power:	3.0 Volts DC (2 "AA" Alkaline batteries included)
Compatibility:	Multi-stage heat/cool systems with up to two stages of heating and two stages of cooling
Control Range:	45° to 90° F (7° to 32° C)
Display Range:	40° to 99° F (4° to 37° C)
Accuracy:	+/- 1° F (+/- .5° C)
Temperature Differential:	1st Stage - .5°, 1°, or 2° F (.25°, .5°, or 1° C) 2nd Stage - 2°, 3°, 4°, 5°, or 6° F (1°, 1.5°, 2°, 2.5°, or 3° C)
Storage Temperature:	14° to 140° F (-10° to 60° C)
Operating Humidity:	5% to 95% Relative Humidity
Interchangeable Sub-Base:	Braeburn 3100 Non-Programmable 2 Heat / 2 Cool
Terminations:	R, Y1, Y2, W2, W1, G, O, B, C

Shipping Information

INDIVIDUAL CARTON	MASTER CARTON
Dimensions: 5.25" x 5.88" x 2.00"	Quantity: 6
Weight: .70 lbs.	Dimensions: 6.25" x 11.75" x 6.25"
	Cubic Feet: .26
	Weight: 4.2 lbs.

Braeburn 5100 Replaces

Honeywell®	TH6220, TH7220*, TH7320*, T8024D, TH8320*
White-Rodgers®	1F81-261, 1F95-371
Robertshaw®	8625-1, 9615, 9715i*

*Verify specific multi-stage application requirements.
All trademarks are the property of their respective owners.

Accessories

2950 Universal Wall Plate (6.5" x 6.5" x .125")
5970 Universal Thermostat Guard

FREE Contractor Branding Available!

Visit our website (www.braeburnonline.com) for more information, contact your local distributor or call our sales department toll-free at 866-268-5599 (U.S. Only), 630-844-1968 (Outside the U.S.).

Date: _____

Engineer: _____

Job Name: _____

Model No.: _____

Location: _____

Submitted By: _____

Contractor: _____

Submitted For Approval: _____ Record: _____