

# Braeburn®

## Model 2200

### Multi-Stage 2 Heat / 1 Cool Conventional or Heat Pump Thermostat

## Builder Series 5-2 Day Programmable



### Features

- 5-2 Day Separate Weekday / Weekend Programming
- Large Display with Bright Blue Backlight
- Adjustable Temperature Limits
- Hardwire or Battery Powered
- Non-Volatile Memory Retains User Settings
- Filter Check Monitor
- Adaptive Recovery Mode (ARM™)
- Adjustable 1st and 2nd Stage Temperature Differential
- ESD Guard™ Electronic Circuitry
- Compressor Short Cycle Protection
- Separate Heating and Cooling Set Point Program Times and Temperatures
- Temporary Program Override for 4 Hours or Until Next Set Point
- Programmable Extended Hold Mode
- Front Access Reset Button
- F° / C° Switch
- Auxiliary Heat Status Indicator
- Mounts to Horizontal Box
- Low Battery Indication
- Easy Access Front Battery Door
- Separate O & B Terminals
- Meets California Title 24 Guidelines

The  
brighter  
choice®

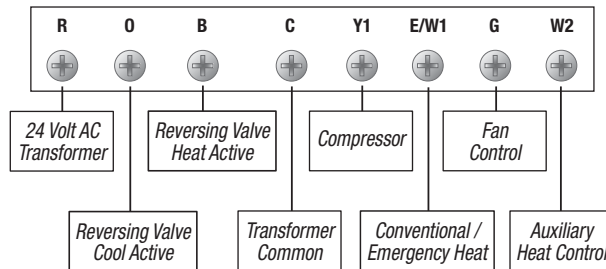
**5** YEAR  
LIMITED  
WARRANTY

Builder Series

FREE Contractor Branding! Visit [www.braeburnonline.com](http://www.braeburnonline.com)

# Braeburn®

## Model 2200 Terminal Designations



## Architectural Specifications

The digital programmable thermostat shall be a Braeburn®, model number 2200, 3.75" high x 4.94" wide x 1.19" deep, powered independently with either 24 Volt AC or with two "AA" alkaline batteries (3.0 Volt DC). The thermostat shall be compatible with multi-stage conventional or heat pump systems with up to two stages of heating and one stage of cooling. The thermostat shall have a bright blue backlight display, front loading battery door and separate sub-base for trouble free installation. Temperature control range shall be between 45° and 90° F (7° and 32° C), accuracy of +/- 1° F (+/- .5° C), humidity range between 5% and 95% relative humidity. The thermostat shall include non-volatile memory to retain user settings, adjustable temperature limits, filter check monitor, adaptive recovery mode (ARM™), separate heating and cooling set point program times and temperatures, and auxiliary heat indicator. Thermostat shall have low battery indication and a front reset button will return user settings to default values when pressed. The thermostat can be mounted to a horizontal junction box.

## Product Specifications

<b>Dimensions:</b>	3.75" x 4.94" x 1.19"
<b>Electric Rating:</b>	24 Volt AC (18-30 Volt AC) 1 amp maximum load per terminal 4 amp total maximum load (all terminals)
<b>AC Power:</b>	18-30 Volt AC
<b>DC Power:</b>	3.0 Volts DC (2 "AA" Alkaline batteries included)
<b>Compatibility:</b>	Multi-stage conventional or heat pump systems with up to two stages of heating and one stage of cooling
<b>Control Range:</b>	45° to 90° F (7° to 32° C)
<b>Display Range:</b>	40° to 99° F (4° to 37° C)
<b>Accuracy:</b>	+/- 1° F (+/- .5° C)
<b>Temperature Differential:</b>	1st Stage - .5°, 1°, or 2° F (.25°, .5°, or 1° C) 2nd Stage - 2°, 3°, 4°, 5°, or 6° F (1°, 1.5°, 2°, 2.5°, or 3° C)
<b>Storage Temperature:</b>	14° to 140° F (-10° to 60° C)
<b>Operating Humidity:</b>	5% to 95% Relative Humidity
<b>Terminations:</b>	R, O, B, C, Y1, E/W1, G, W2

## Shipping Information

<b>INDIVIDUAL CARTON</b>	<b>MASTER CARTON</b>
<b>Dimensions:</b> 4.33" x 5.63" x 1.86"	<b>Quantity:</b> 6
<b>Weight:</b> .58 lbs.	<b>Dimensions:</b> 5.94" x 11.81" x 4.80"
	<b>Cubic Feet:</b> .19
	<b>Weight:</b> 3.7 lbs.

## Braeburn 2200 Replaces\*

<b>Honeywell®</b>	TH2210, TH4210, T8011, T8024
<b>White-Rodgers®</b>	1F72-151, 1F73-174, 1F82-0261
<b>Robertshaw®</b>	RS3210, 8625, 8625-1, 9615, 9620
<b>ICM®</b>	SC3201
<b>LuxPro®</b>	PSPH521L

\*Verify specific multi-stage heat pump application requirements.  
All trademarks are the property of their respective owners.

## Accessories

2950 Universal Wall Plate (6.5" x 6.5" x .125")
5970 Universal Thermostat Guard

## FREE Contractor Branding Available!

Visit our website ([www.braeburnonline.com](http://www.braeburnonline.com)) for more information, contact your local distributor or call our sales department toll-free at 866.268.5599 (U.S.), +1.630.844.1968 (Outside the U.S.).

Date: \_\_\_\_\_  
Job Name: \_\_\_\_\_  
Location: \_\_\_\_\_  
Contractor: \_\_\_\_\_

Engineer: \_\_\_\_\_  
Model No.: \_\_\_\_\_  
Submitted By: \_\_\_\_\_  
Submitted For Approval: \_\_\_\_\_ Record: \_\_\_\_\_

Braeburn Systems LLC • 2215 Cornell Avenue • Montgomery, IL 60538 • Toll Free 866.268.5599 (U.S.) +1.630.844.1968 (Outside the U.S.)